

Firmware-Update SMS-Modul

These instructions show you how to update the firmware of the SMS-Module step by step. Please proceed exactly as described below!

You need the software-tool *Flash FX* from *Fujitsu* to perform the update. This program doesn't need an installation. Just copy all the files of the ZIP-archive into a directory.

1. Switch the *SMS-Module* off (switch to the left).

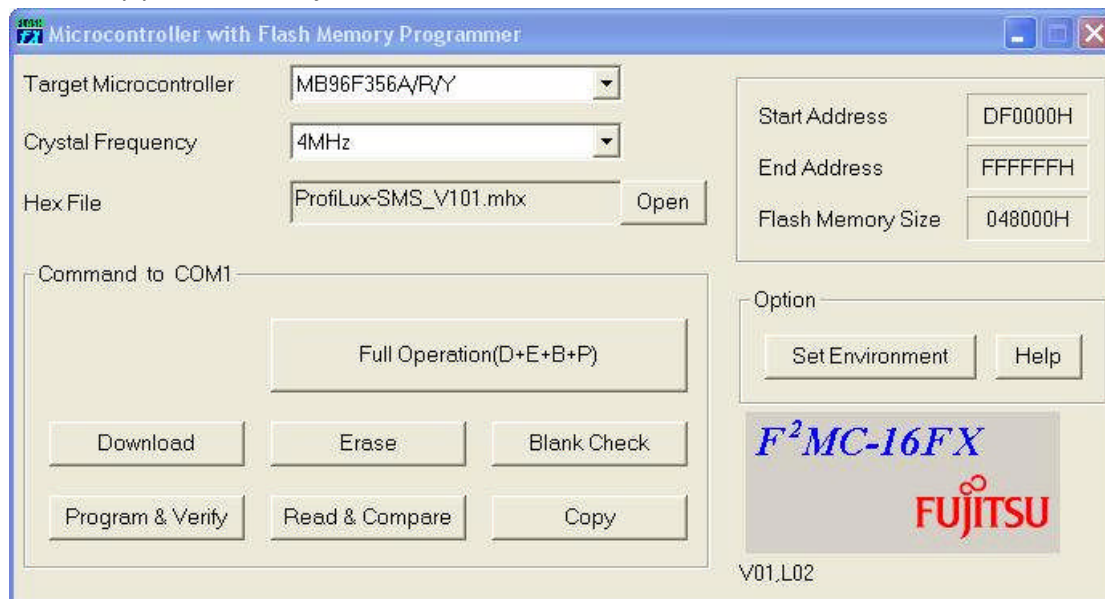


2. Connect the *SMS-Module* directly to a COM (RS232)-port of your PC.

3. Start *flash.exe* and adjust the program now as in the screenshot below:

Target Microcontroller - MB96F356A/R/Y and **Crystal Frequency** – 4MHz

Eventually you have to adjust the correct *COM-Port*, therefore click on **Set Environment**.



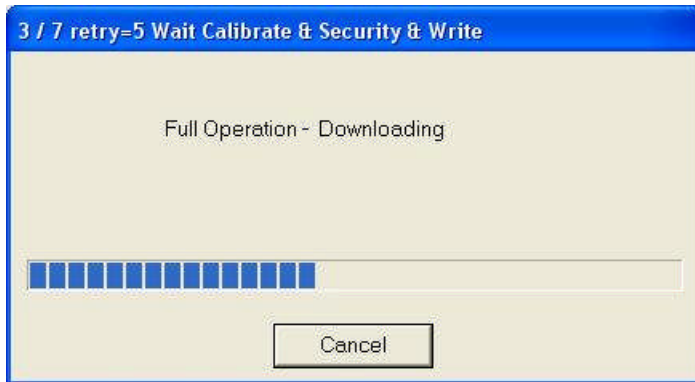
Choose the correct *Hex File* by clicking on **Open** (the file with the new firmware). Here in this example this would be *Profilux-SMS_V101.mhx*.

4. Now the update is started by clicking on **Full Operation (D+E+B+P)**.

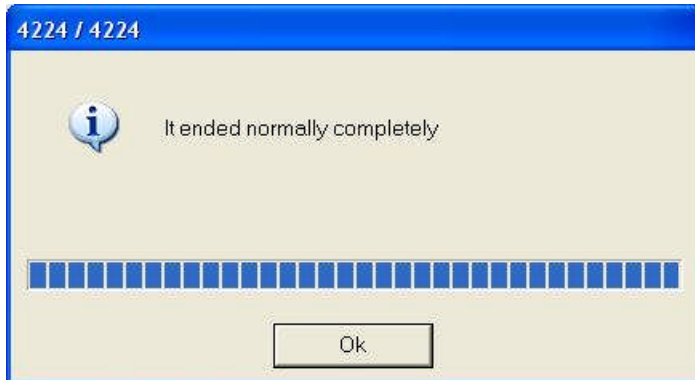


Important: **FIRST** confirm with clicking **OK**, **THEN** shut on the switch of the *SMS-Module*! It is important that you shut on the switch quickly to avoid a switch bounce.

Subsequently this window is displayed:



The display changes during operation: *Downloading, Erasing, Programming*. If the update has been performed successfully this message will be displayed:



Hint: If the update could not be finished successfully a timing problem may be the reason (during clicking of **OK** and switching on the *SMS-Module*) – In this case just try it again.

5. Now restart the *SMS-Module* with switching it off and on.

Date 01/02/2009
GHL GmbH & Co. KG
Jung-Stilling-Str. 21
67663 Kaiserslautern
www.aquariumcomputer.com

